

Buffalo State
State University of New York

Scholarship Support Program

**Supporting
excellence in
research and
scholarly
activities
throughout the
Buffalo State
community.**

**Center for Health
and Social Research
Classroom Building
A203**

Tel: 716-878-6137

Scholarship Support Program Description

The mission of the Scholarship Support Program (SSP) is to provide high-level conceptual and technical support for Buffalo State faculty and staff members engaging in scholarly activities. The SSP at the Center for Health and Social Research was initiated as a direct result of the Buffalo State strategic planning process, which identified the need to coordinate and integrate research opportunities throughout the campus.

Buffalo State has made a commitment to having scholars in the classroom and to strengthening the professional development of faculty and staff. The SSP is designed to enhance creative and scholarly opportunities by offering broad conceptual and technical services in support of the entire spectrum of scholarly activities. The goal of the SSP is to increase the scholarly output of the faculty in such areas as conference papers, presentations, program evaluations, refereed articles, book chapters, project reports, and grant and contract applications.

The Center for Health and Social Research was selected to provide SSP services because it has a strong track record of successful scholarly activity and has the expertise on staff to provide a broad range of conceptual and technical services. In addition, the SSP will utilize on- and off-campus consultants when a project requires specialized expertise. Scholarly ideas on *any* topic are appropriate for SSP services.



Scope of Services Provided

Conceptualization of Scholarly Ideas

- Encouragement for development of concepts
- Feedback on your ideas
- Guidance on expanding an idea into a paper or project

Project Design and Qualitative and Quantitative Methodology

- Protocol development
- Qualitative, quantitative, and mixed designs
- Human subjects issues
- Selection of data types
- Sampling issues

Questionnaire Development

- Selection of measures
- Selection of questionnaire type
- Administration issues
- Drafts and edits of questionnaires

Development of Program Evaluations

- Client expectations
- Relevant measures of program impact
- Evaluation for funded projects

Data Management

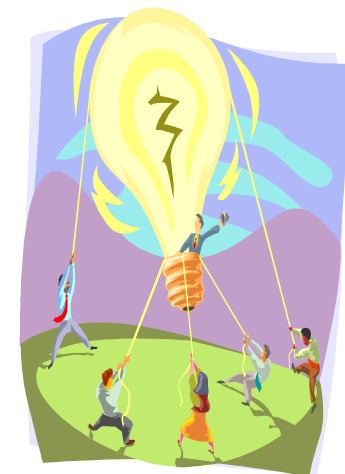
- Database design
- Assessment of data quality
- Selection of software for data management

Statistical Design

- Statistical power consultation
- Selection of statistical techniques

Data Analysis

- Consultation on analytical approaches
- Utilization of standard analytical packages (e.g., SPSS, SAS)
- Implementation of data analysis



SSP Integration with the Research Foundation



THE RESEARCH FOUNDATION
The State University of New York

The SSP and the Research Foundation of SUNY at Buffalo State (RF) operate in close collaboration. SSP staff will refer faculty to the RF for Pre-Award services such as the identification of appropriate funding opportunities and sources, inquiries directed at sponsors, budget development, and grant/contract submissions. The RF is the official office designated for the submission of all Buffalo State proposals to outside funding sources, in addition to providing federally-mandated education, review, and oversight of all research involving human subjects or animal experiments. The RF Pre-Award office will refer faculty in need of conceptual and technical services to the SSP. To obtain RF Pre-Award services, please contact Carol Darstein, J.D., Coordinator of Pre-Award Office at 716-878-3047.

Obtaining SSP Services

To obtain SSP services, contact the Center for Health and Social Research at 716-878-6137 and request a meeting. Faculty members with concepts and ideas at any stage of development are encouraged to contact the SSP. Contact the SSP at the earliest stages of concept/project development is especially important.

Summary

The Scholarship Support Program (SSP) is made available through the support of the Office of Graduate Studies and Research, Academic Affairs, and the Research Foundation of SUNY at Buffalo State.

The SSP staff, including Dr. William Wieczorek, Director of the Center for Health and Social Research, will work directly with faculty members on an individual basis to develop a service plan to achieve a specific goal, such as a paper, article, survey, or the scientific/technical/evaluation portion of a grant or contract application. No idea is too big or too small to bring to the SSP.

Center for Health and Social Research

Buffalo State College
1300 Elmwood Avenue
Classroom Building A203
Buffalo, NY 14222

Phone: 716-878-6137

Fax: 716-878-5905

Links to the SSP can be found by going to the following web sites:

<http://www.buffalostate.edu/centers/chsr/>

<http://rf.buffalostate.edu/index.htm>