

Allegretto  $\text{♩} = 116$



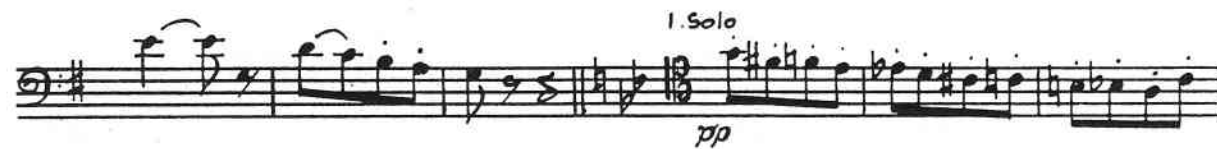
Allegretto quasi andante  $\text{♩} = 104$



Allegro vivace  $\text{♩} = 72$



Preludio (in uno)  
atto 2.  
 $\text{♩} = 108$



poco rall.

II. *2 tempo*

*p*

*Mosso*  $\text{♩} = 112$   
I. Solo

*pp* *p*

*p*

*Allegro, quasi andantino*  $\text{♩} = 100$   
I. Solo

*mf* *colcanto*

*mf*

*Allegro deciso*  $\text{♩} = 108$   
Solo

*cresc. f* *p* *mf*

*Allegro giocoso*  $\text{♩} = 108$   
Solo

*p*

*p*

*p*

*p*

*p*

*p*